

RemoteMix 2™

Broadcast Field Mixer



FEATURES

	2	3.5	4
» HD Voice (Wide-Band Speech)	•	•	•
» Works with Analog and Digital PBX or VoIP Phones		•	•
» Connects to Wireless Phones & Notebooks	•	•	•
» Bluetooth Wireless Technology		•	•
» 4-conductor 3.5mm Headset Interface	•	•	•
» XLR Mic Jacks	2	3	4
» Mic/Line Pad Switch	•	•	•
» Individually Switchable 48 Volt Phantom Power			•
» ¼" Headphone Jacks with Individual Level Controls	2	3	4
» Individual Headphone Source Selector			•
» 3.5 mm Send and Receive Jacks	•	•	•
» LED VU Meter	•	•	•
» Phone Line Hybrid with DTMF Keypad	•	•	•
» Redial Button		•	•
» Handset Selector Switch (Electret, Carbon, Dynamic)		•	•
» Bass Boost			•
» Hot Swappable Dual 9V Batteries and 120-240 VAC External Power Supply	•	•	•

The Handy, Compact Mixer. RemoteMix 2 is a two-channel field mixer / headphone amplifier that's a little more hands-on in the remote broadcast environment. We've tightened the belt on this one. It may be smaller but we didn't skimp out on the good stuff. RemoteMix 2 provides a communications interface for remote broadcast, IFB, or a backup audio path. The integrated headphone amplifier provides sidetone to monitor all inputs as well as an external feed. RemoteMix 2 features a phone line hybrid with keypad along with a wired notebook/cell phone headset interface. These parts were designed to work together, saving setup time and wiring in the field.

TV - Use a Phone Line for Real Time Production Monitoring. RemoteMix 2 Combines a small front-end mixer with two powerful ¼" headphone outputs. Send and receive interview audio while pulling IFB off the phone line, cell phone or notebook.

Radio - Perfect for Live Remotes. Use it as a front-end mixer for your POTS, ISDN, IP or Smart Phone Codec. Or, use it as a phone line hybrid, calling in to your studio talk show hybrid.

Remote Mix 3.5 and RemoteMix 4 shown for comparison

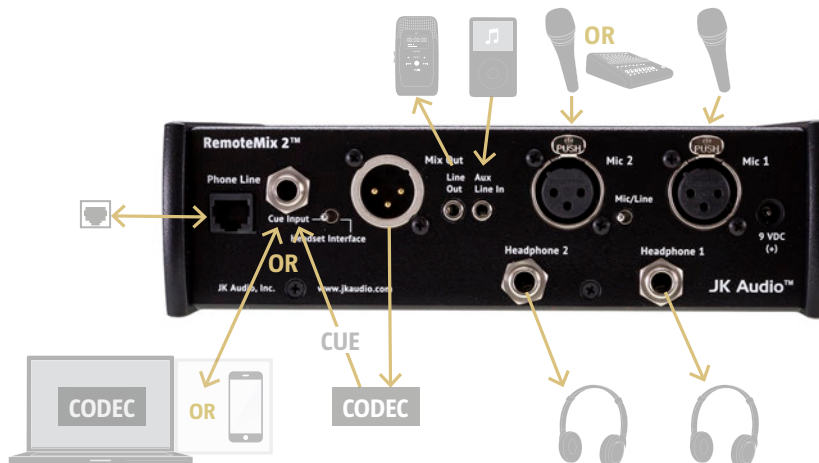
2 = RemoteMix 2 **3.5** = RemoteMix 3.5 **4** = RemoteMix 4

RemoteMix 2™

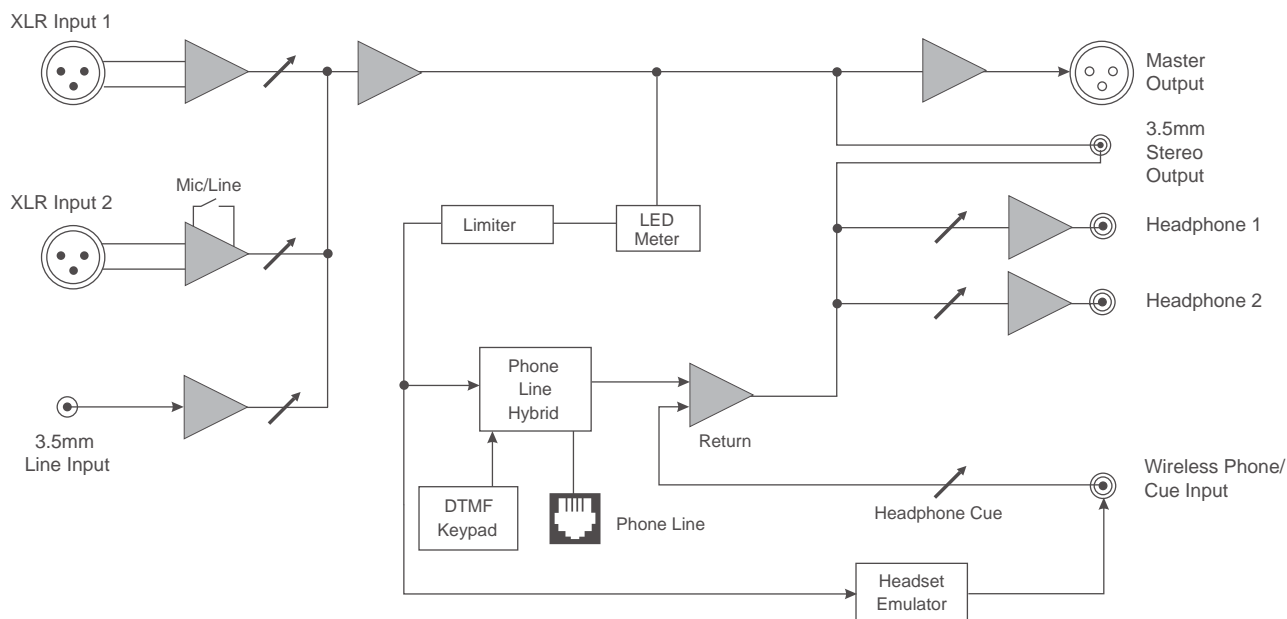
Broadcast Field Mixer



REAR VIEW



BLOCK DIAGRAM



SPECIFICATIONS

Input

Female XLR Mics:	2k ohms / -25 dBu nom (Mic/Line pad switch = +6 dBu max)
1/8" (3.5mm) Stereo Line:	20k ohms / -10 dBu nom
Headphone Cue 1/4":	20k ohms / -10 dBu nom

Output

Balanced Male XLR:	+16 dBu max, 20 Hz - 20 kHz, +/- 1dB
1/8" (3.5mm) Stereo:	100 ohms / -10 dBu nom
Headphone 1/4" Stereo:	8 ohms / 1/3 watt per channel

Phone Line Connector:	RJ11C
Ringer:	0.5B REN
Isolation:	3750 VAC
Power:	100-240 VAC, 50-60Hz or Two 9 VDC batteries
Size:	7.75" x 6.5" x 2.3"
Weight:	2.1 lbs (960 g)

